

TD 50 TOUCHSCREEN DISPLAY

PRODUCT UPDATE

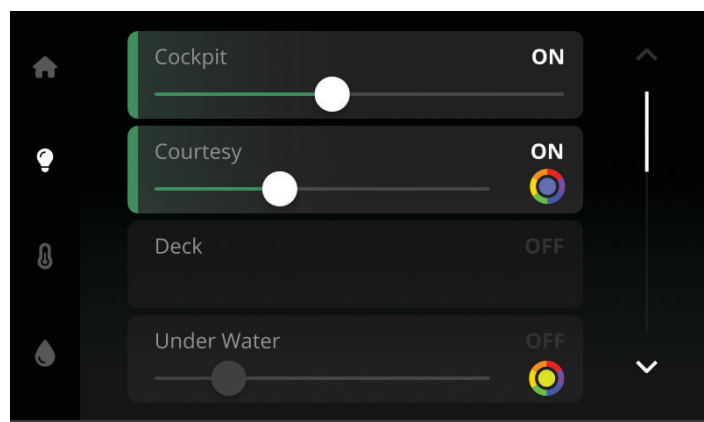
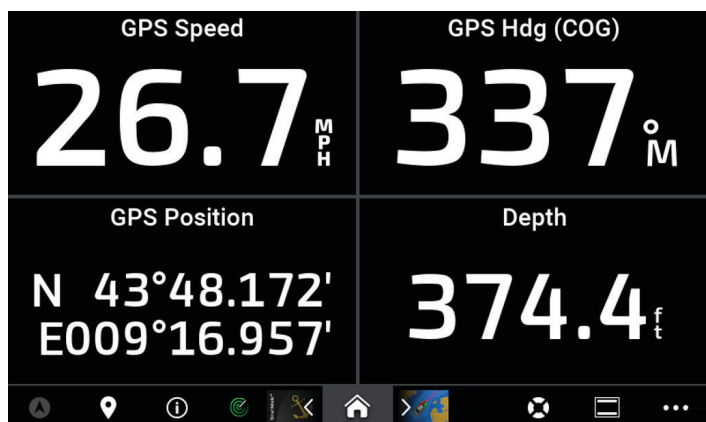
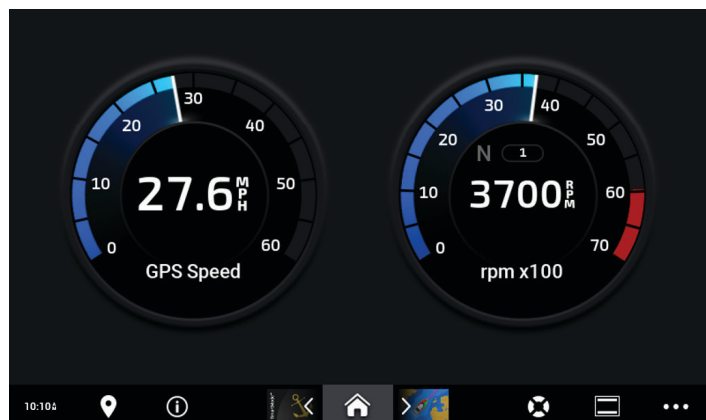
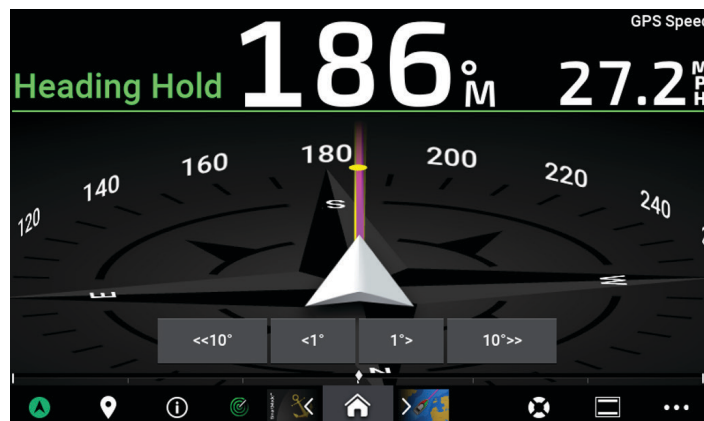
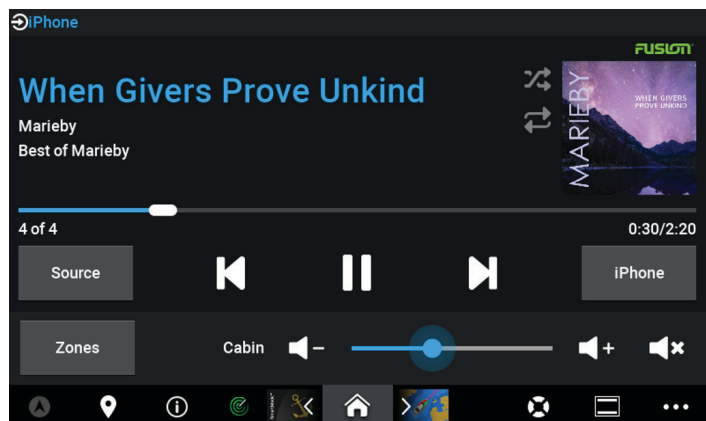


PRODUCT OVERVIEW:

The TD 50 touchscreen display with 5" edge-to-edge glass offers supplementary control, switching and instrumentation for your onboard marine or RV systems. The unit is compatible with the NMEA 2000® network and Garmin Marine Network, and it supports EmpirBus™ components and OneHelm™ digital switching installations. This allows you to view and control engine and vessel data and adjust settings for lights, air conditioning, refrigeration, entertainment systems, security sensors, autopilots or any other information on the network. The unit's sleek design and minimal footprint offer easy mounting and convenient access from virtually any location on the boat or RV.



SCREENSHOTS:



SPECIFICATIONS:

Dimensions without sun cover (H x W x D):	4.1" x 4.5" x 2.0" (10.5 x 14.0 x 5.1 cm)
Dimensions with sun cover (H x W x D):	4.5" x 5.7" x 2.2" (11.3 x 14.4 x 5.6 cm)
Weight without sun cover:	11.6 oz. (328 g)
Weight with sun cover:	13.2 oz. (375 g)
Temperature range:	From 5° to 131° F (from -15° to 55° C)
Compass-safe distance:	7.9" (20 cm)
Case material:	Fully gasketed polycarbonate
Lens material:	Glass with anti-glare and anti-fingerprint finish
Water rating:	IPX7
Brightness:	1200 cd/m ² (NIT)
Power usage:	5.9 W max
NMEA 2000® input voltage:	9 to 16 Vdc
NMEA 2000 LEN @ 9 Vdc:	13 (650 mA)

PRODUCT CONFIGURATION:



SKU	UPC	MSRP (USD)	AVAILABLE	INCLUDES	COUNTRY OF ORIGIN	
010-02139-10	753759259211	\$699.99	Now	TD 50, mounting hardware and documentation	Made in Taiwan. Cables made in China or Taiwan.	

SCHEDULE B	HTS CODE	GIFT BOX DIMENSIONS	GIFT BOX WEIGHT	MASTER CARTON DIMENSIONS	MASTER CARTON WEIGHT	CARTON QUANTITY
9014806000	9014.80.4000	8.9" x 6.7" x 4.9" (22.5 x 17.0 x 12.4 cm)	1.8 lbs (0.8 kg)	21.0" x 19.1" x 14.4" (53.3 x 48.5 x 36.7 cm)	31.8 lbs (14.4 kg)	16

COMPATIBLE PRODUCT OVERVIEW:

GPSMAP® 8400 AND GPSMAP® 8600 COMBO SERIES



GPSMAP® 7X3, GPSMAP® 9X3 AND GPSMAP® 12X3 COMBO SERIES



REACTOR™ 40 AUTOPILOT SERIES



COMPACT REACTOR™ 40 AUTOPILOT SERIES



ONEHELM™ INTEGRATED DIGITAL SWITCHING | EMPIRBUS™ SYSTEMS



See Garmin.com for details and available devices.

NMEA 2000 and the NMEA 2000 logo are registered trademarks of the National Marine Electronics Association.

Please note: The ECCNs and Classification numbers provided represent the opinion of Garmin International, Inc. of the proper classifications for the products today (based on the original software and/or original hardware). Classifications are subject to change. Under the U.S. export regulations, the U.S. Government assigns your organization or client, as exporter/importer of record, the responsibility for determining the correct classification of any item at the time of export/import. Depending on the products, the customer, or the country of destination, an export license may be required by the Department of Commerce prior to shipment. The Department of Commerce's Bureau of Industry and Security (former Bureau of Export Administration) website (<http://www.bis.doc.gov>) provides information that might be useful to you in determining whether you need to obtain a license for a particular shipment. To be clear, if an item described above does require a validated export license, it would be the exporter's responsibility to obtain this license prior to exportation.